

\$1,598,000 - 16.06 Wintergreen Road Null, Rural Rockyview

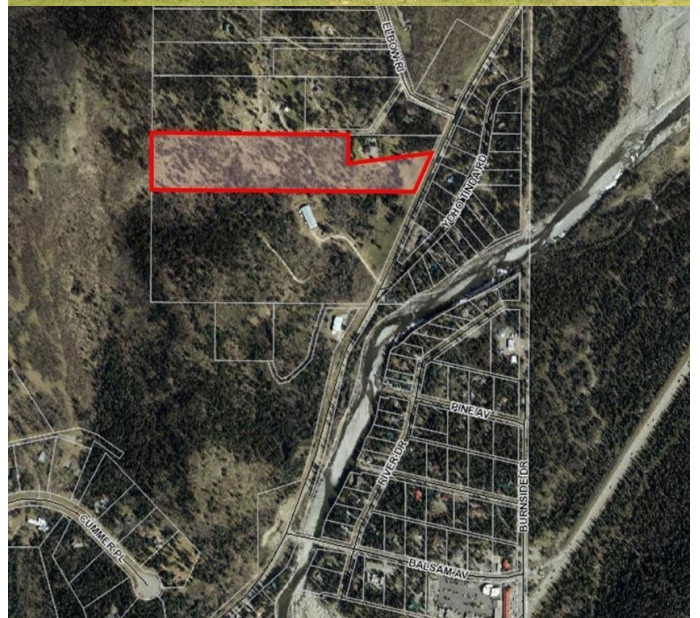
MLS® #C4224269

\$1,598,000

0 Bedroom, 0.00 Bathroom,
Land on 16 Acres

None, Rural Rockyview County, Alberta

LOCATION ALERT-*One of the last pristine LARGE lots available! Located across from the hamlet of Bragg Creek which offers 16.06 acres of breath taking panoramic views of the rolling hills and is backing onto CROWN LAND (horseback riding, hiking etc)-only 20 minutes from Calgary with over 3 ways of access through highway 1--8---or 22x. Lot is fenced and has been well manicured over the many years of ownership. The property has all services brought to the lot line below, strong cell coverage w/most carriers + DSL internet to the property. You are a short walk or drive away to the downtown of Bragg Creek. You will feel comfortable in having all the amenities such as shopping, grocery stores, 3 golf courses, biking trails, hiking trails, fishing, K-9 schools, cross country skiing and much much more. This is a nature lovers paradise w/so much wild life, mature trees and the elbow river down the road. Build your DREAM home , Hold or Develop at anytime! Call for all details.



Essential Information

MLS® #	C4224269
Price	\$1,598,000
Bathrooms	0.00
Acres	16.06
Type	Land
Status	Active

Community Information

Address	16.06 Wintergreen Road Null
Area	Rural Rockyview County
Subdivision	None
City	Rural Rockyview County
Province	Alberta
Postal Code	T0L 0K0

Exterior

Exterior Features Fenced, Hillside, Treed Lot, View

School Information

District Calgary

Listing Details

Listing Office CENTURY 21 ELEVATE REAL ESTATE

Disclaimer: Information herein deemed reliable but not guaranteed by CREB®.

Listing information last updated on October 19th, 2019 at 11:30pm MDT